



N

How I Use
**Artificial
Intelligence**
(Today)

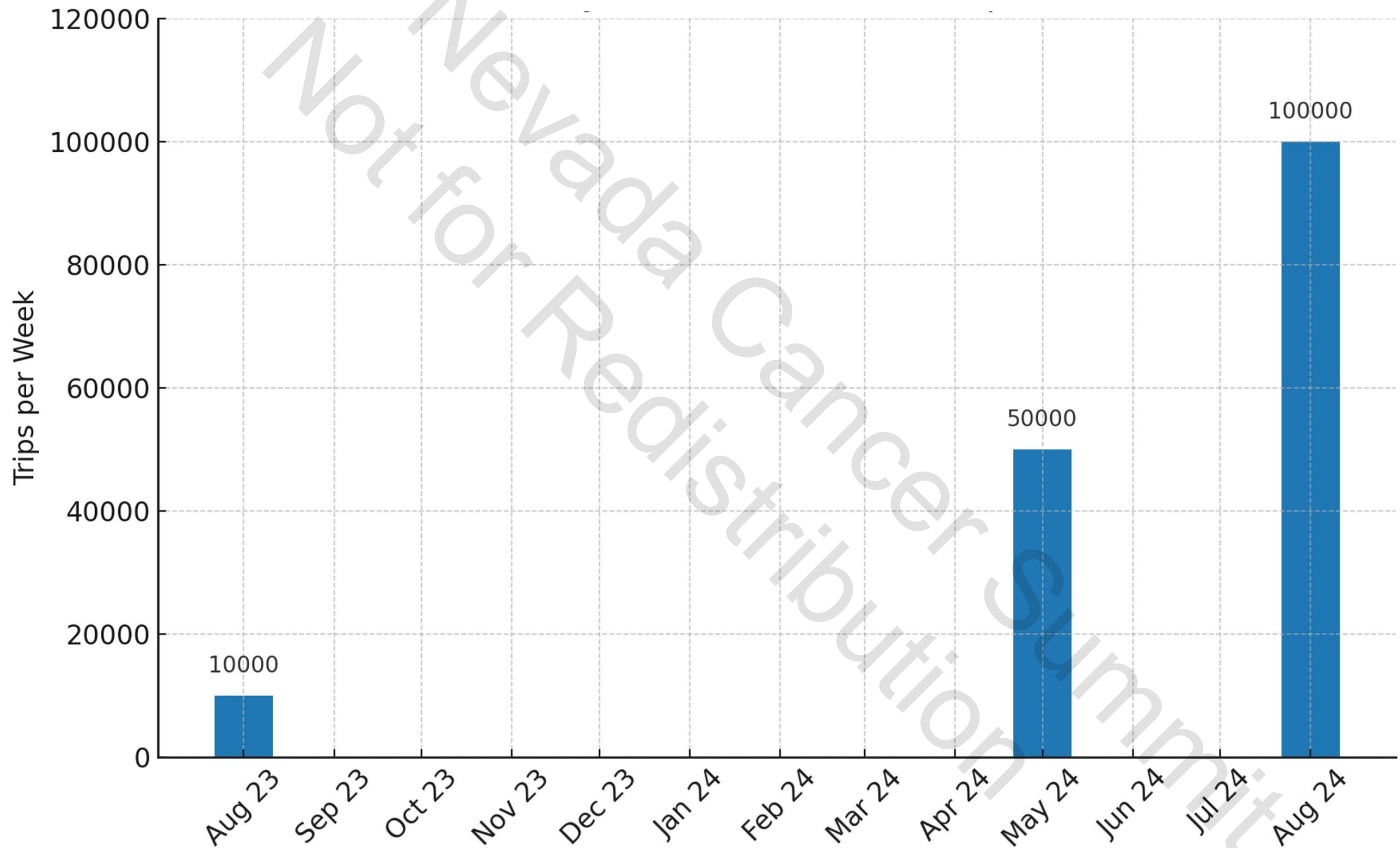
John Westhoff, MD, MPH, FACEP, FACOEM

No Financial Disclosures



Not for credit
Commit

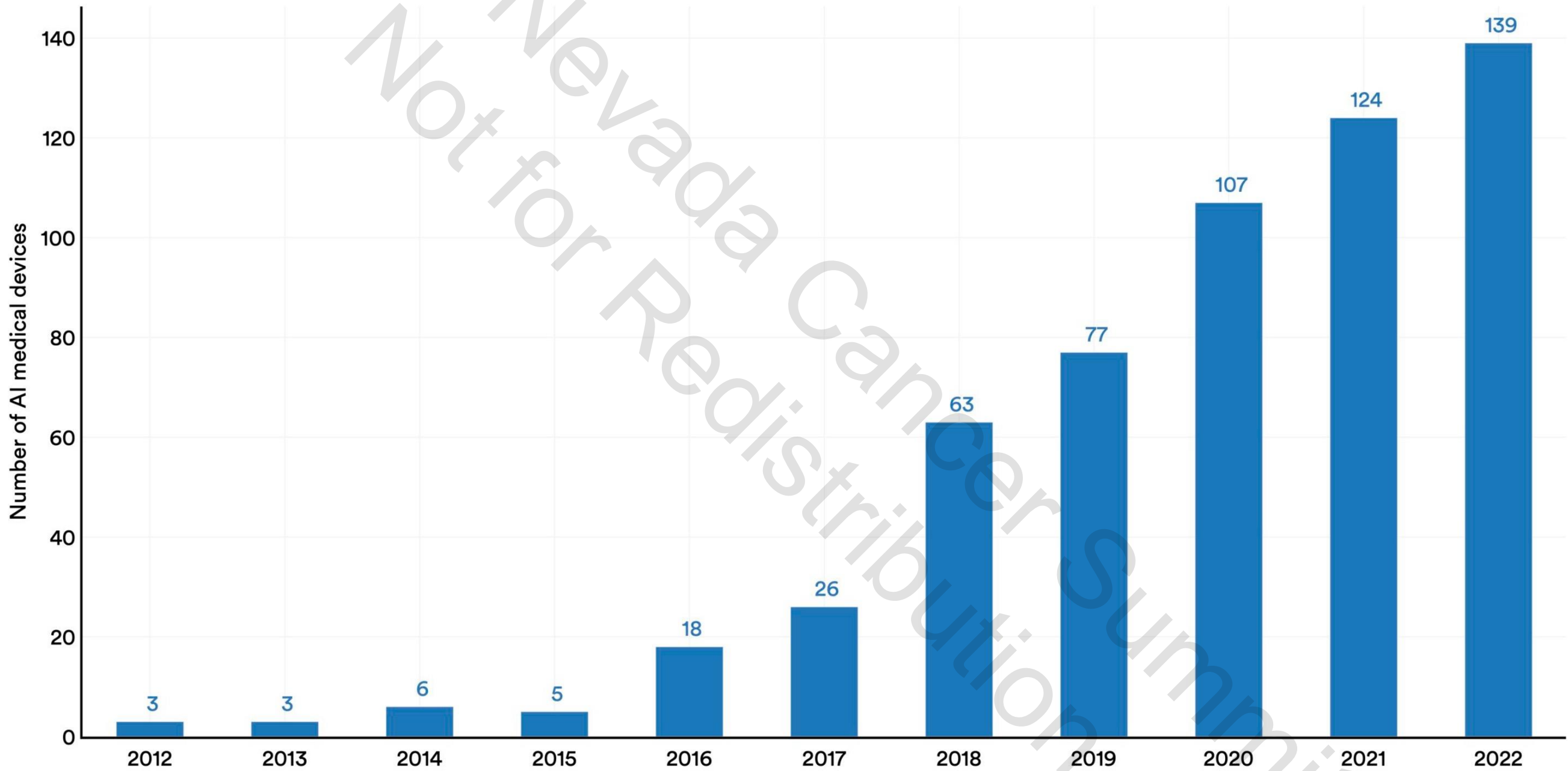
Waymo Paid Driverless Trips



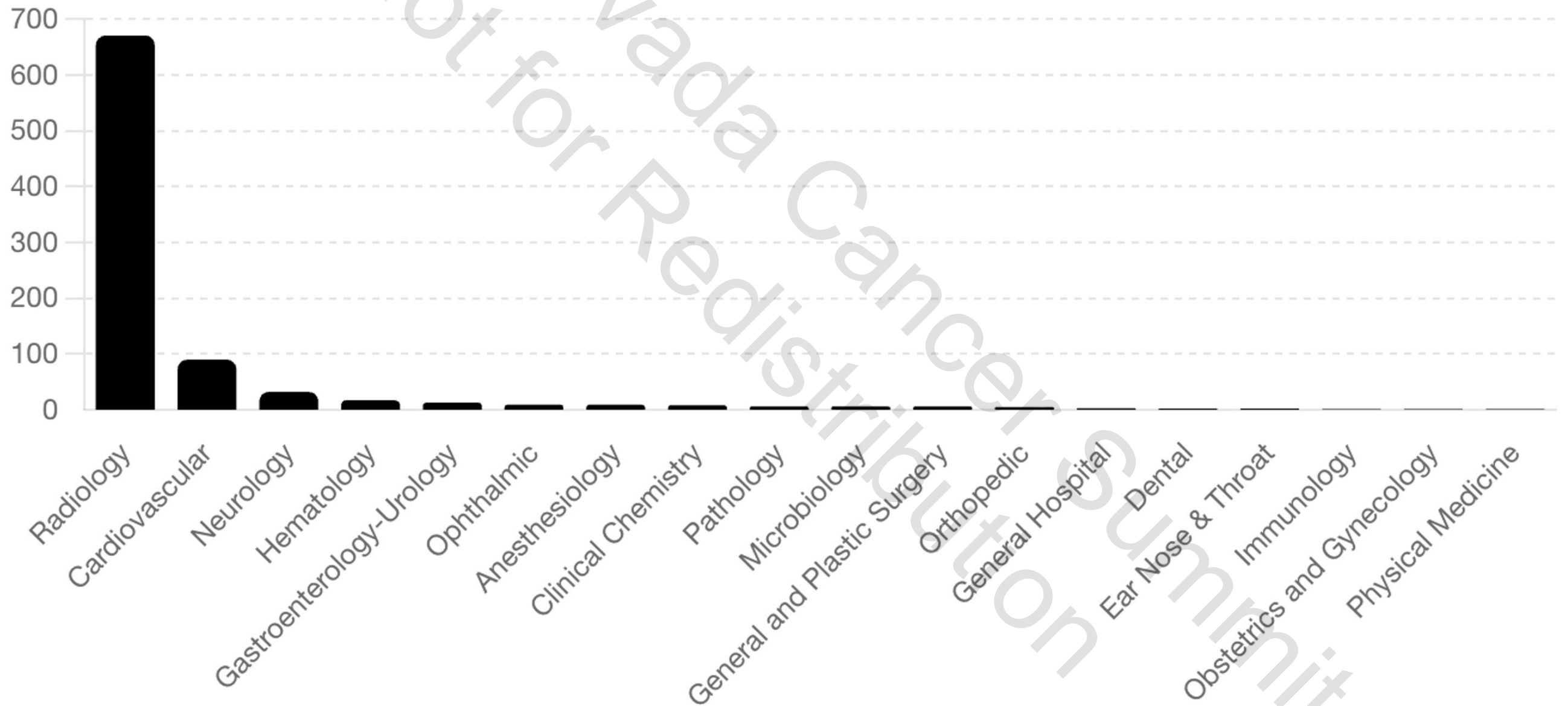
Source: *Understanding AI*, Timothy Lee, Aug 20, 2024

Number of AI medical devices approved by the FDA, 2012–22

Source: FDA, 2023 | Chart: 2024 AI Index report



FDA-Approved AI Devices by Specialty



Data: fda.gov as of May 13, 2024

Chart: ChatGPT

Ai *analysis*

Ai automation

Ai augmentation

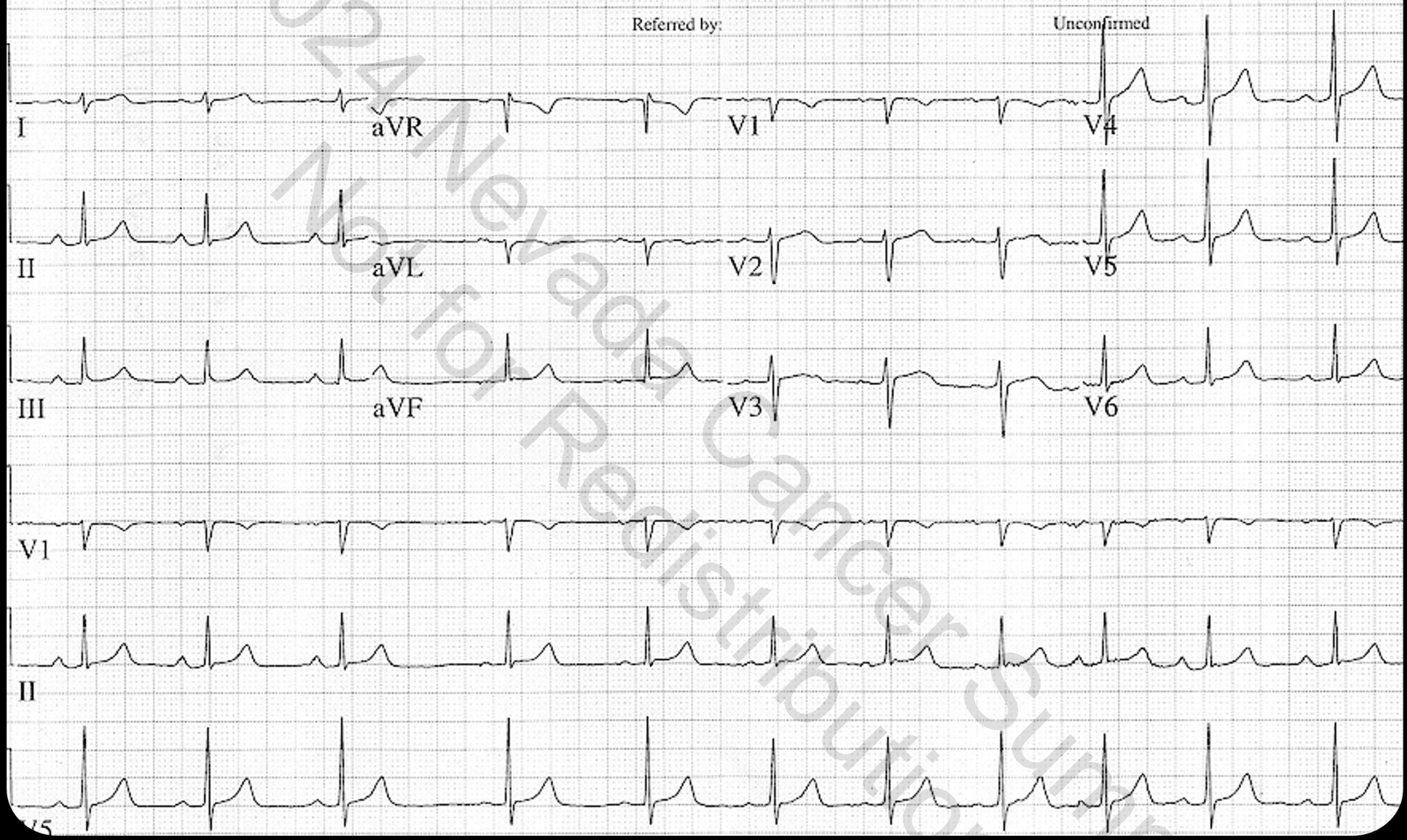
ale
m:4D
8

Vent. rate 67 BPM
PR interval *
QRS duration 88 ms
QT/QTc 396/418 ms
P-R-T axes * 89 66

Atrial fibrillation
Abnormal ECG
No previous ECGs available

Referred by:

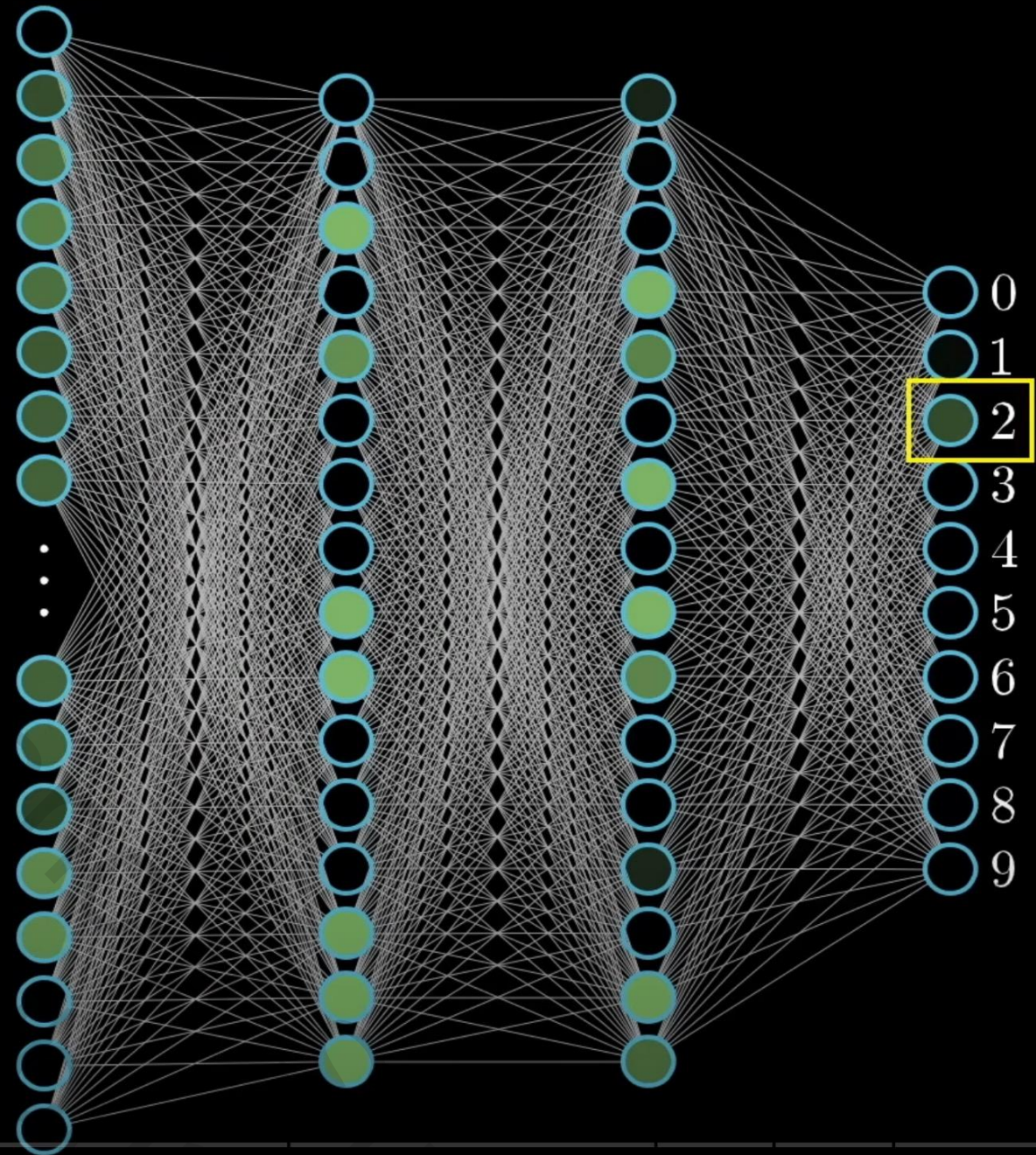
Unconfirmed



Ai analysis



784



1:56 / 18:39 • Series preview >

But what is a neural network? | Chapter 1, Deep learning

3Blue1Brown
6.22M subscribers

Subscribed

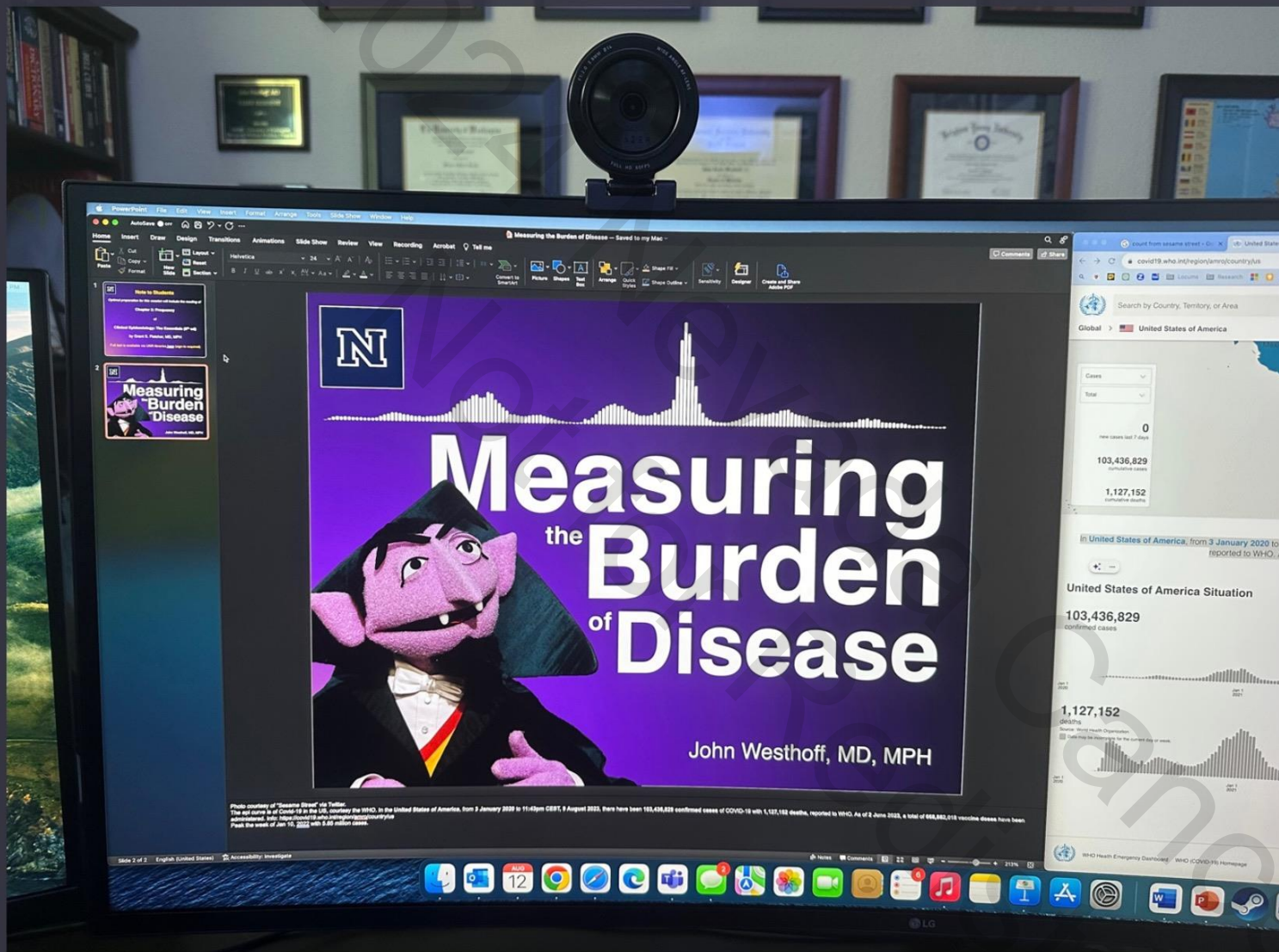
405K

Share

Download

Neural netw

1 / 6



Do you recognize the epi curve displayed here? And who is the figure pictured?



ChatGPT

Yes, the figure pictured is Count von Count from the television show "Sesame Street." As for the epi curve, it appears to display the progression of a disease or condition over time, though the specific details about which disease or condition are not clear from the image alone. It references a situation in the United States, but more context is needed to provide a precise interpretation.

Tell me about this statue?

It's the "Winged Victory of Samothrace," also known as "Nike of Samothrace." It's an ancient Greek sculpture of the goddess of victory. This sculpture is renowned for its depiction of the effects of wind on drapery. The original is housed in the Louvre Museum in Paris. The statue you have is a faithful representation of that ancient work. The statue indicates its placement in a context

Physician Hours Spent on Administrative Tasks

The hours 23 physician specialties spend on paperwork, administration

Andrew Cass - Wednesday, April 19th, 2023



Physical medicine and rehabilitation physicians spend 19 hours per week on paperwork and administrative tasks, according to *Medscape's* "Physician Compensation Report" for 2023.

Overall, physicians spend 15.5 hours per week on paperwork and administration, according to the report. Of that, nine hours are on EHR documentation.

Here are how many hours 23 specialties on paperwork and administrative per week:

1. Physical medicine and rehabilitation: 19 hours
- T-2. Critical care: 18 hours
- T-2. Internal medicine: 18 hours
- T-2. Nephrology: 18 hours
- T-2. Neurology: 18 hours
- T-2. Oncology: 18 hours
7. Family medicine: 17 hours
- T-8. Cardiology: 16 hours
- T-9. Psychiatry: 16 hours

BMO  [Apply now](#)
*Conditions apply. Accounts are subject to approval and are provided in the United States by BMO Bank N.A. Member FDIC.

Sales to customer management handover? **Easy.**

 **monday CRM** [Show me how](#)

Featured Learning Opportunities

Whitepapers

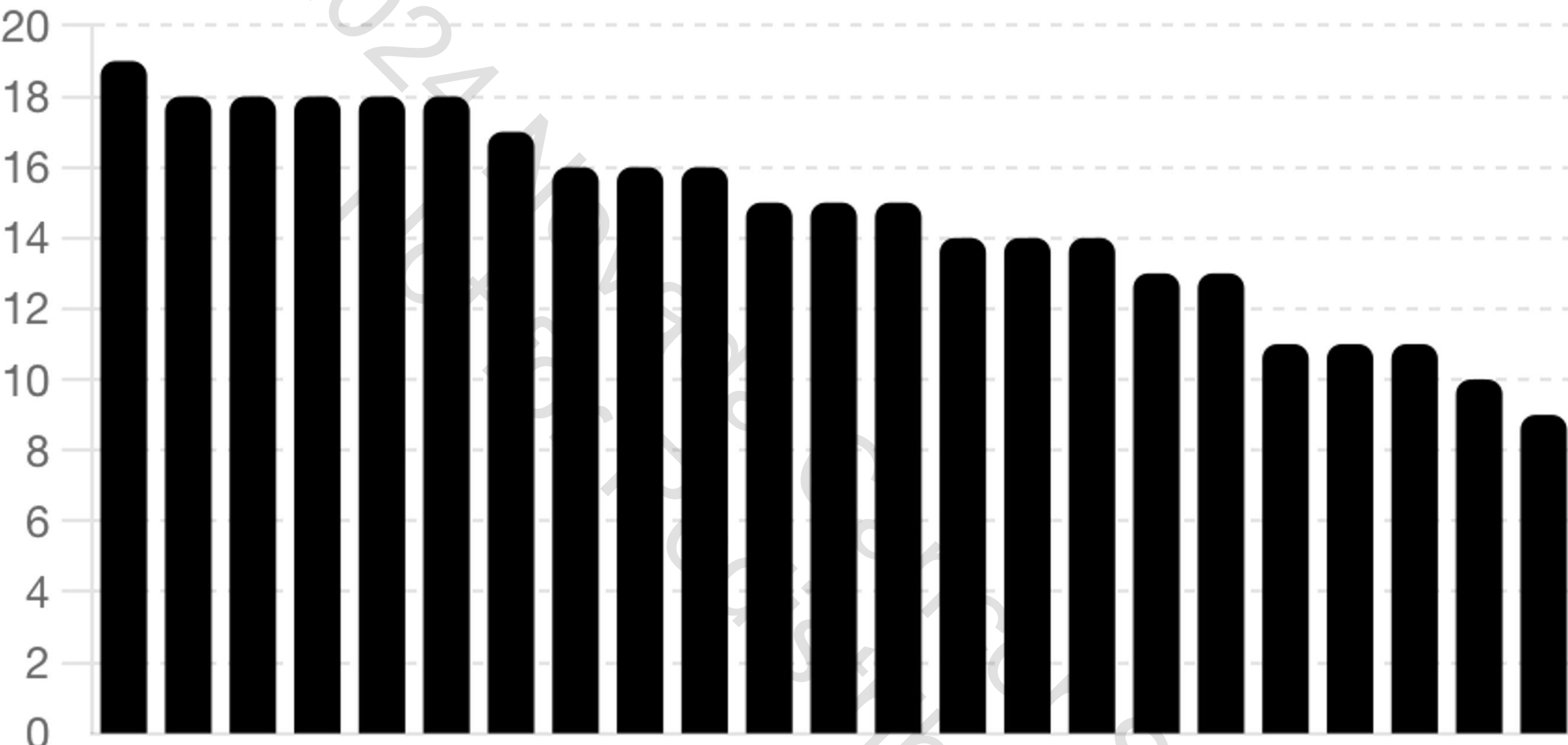
Webinars

Featured Whitepapers

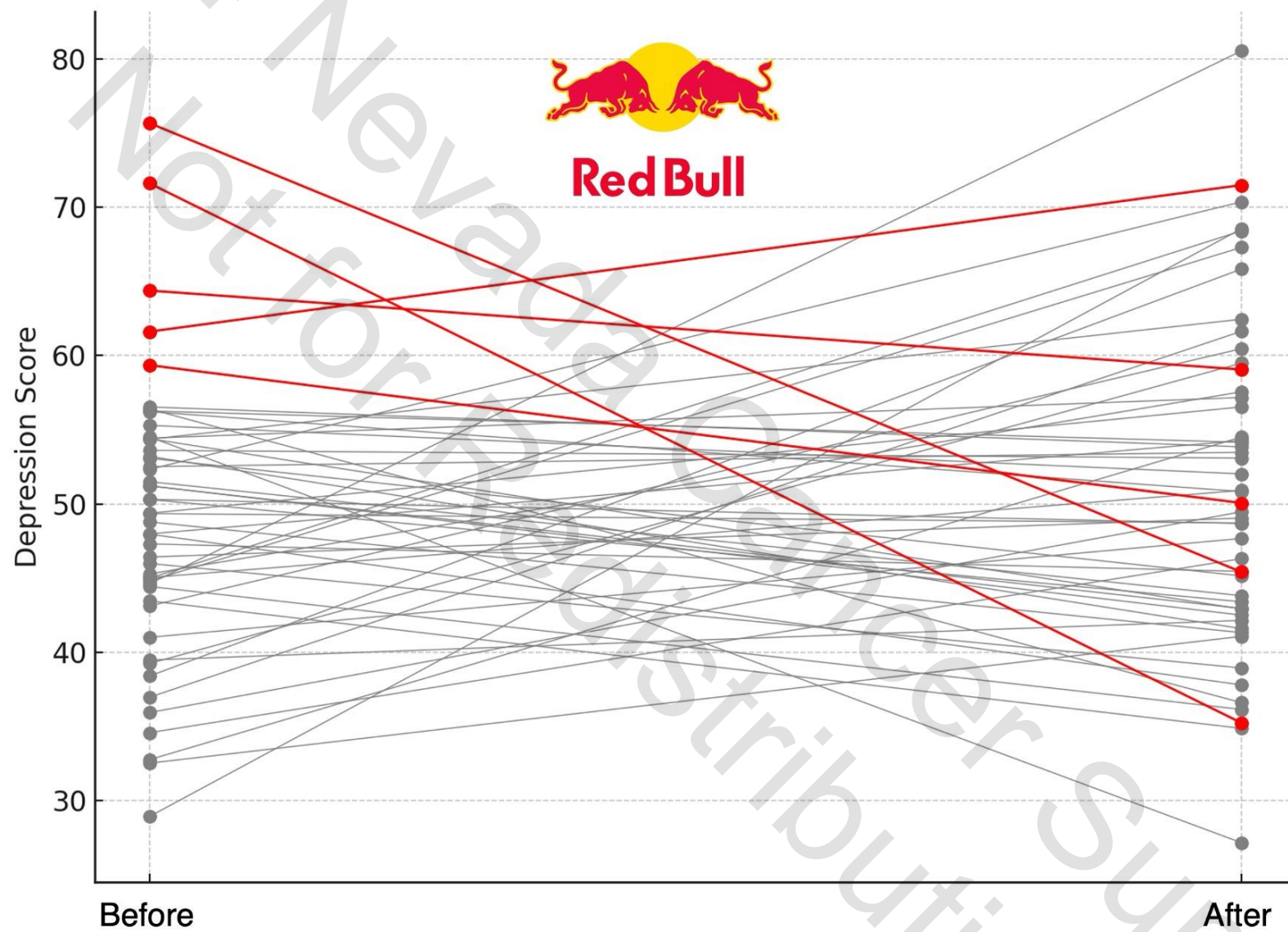
1. Meta-analysis: 70% reduction in HAPI incidence across 19K+ patients with this monitoring system - [Download](#)

Ai automation

Physician Hours Spent on Administrative Tasks



Gedankenexperiment



Inspired by Daniel Kahneman

ChatGPT 4 ▾



ChatGPT

Great, it looks like I've successfully extracted the relevant article. Now that I have the content, let's discuss it. What specific questions or points of confusion do you have about the article "The Limitations of Risk Factors as Prognostic Tools"? [\[-\]](#)



You

Can you walk me step by step through her logic after she says assume that the cumulative incidence is 5% and that we can then calculate the conditional probability that a person with a given value of the risk factor will have the outcome?



ChatGPT

Certainly. The author uses the concept of "cumulative incidence" and "conditional probability" to illustrate some limitations of risk factors as prognostic tools. Here is a step-by-step breakdown:

Aiugmentation

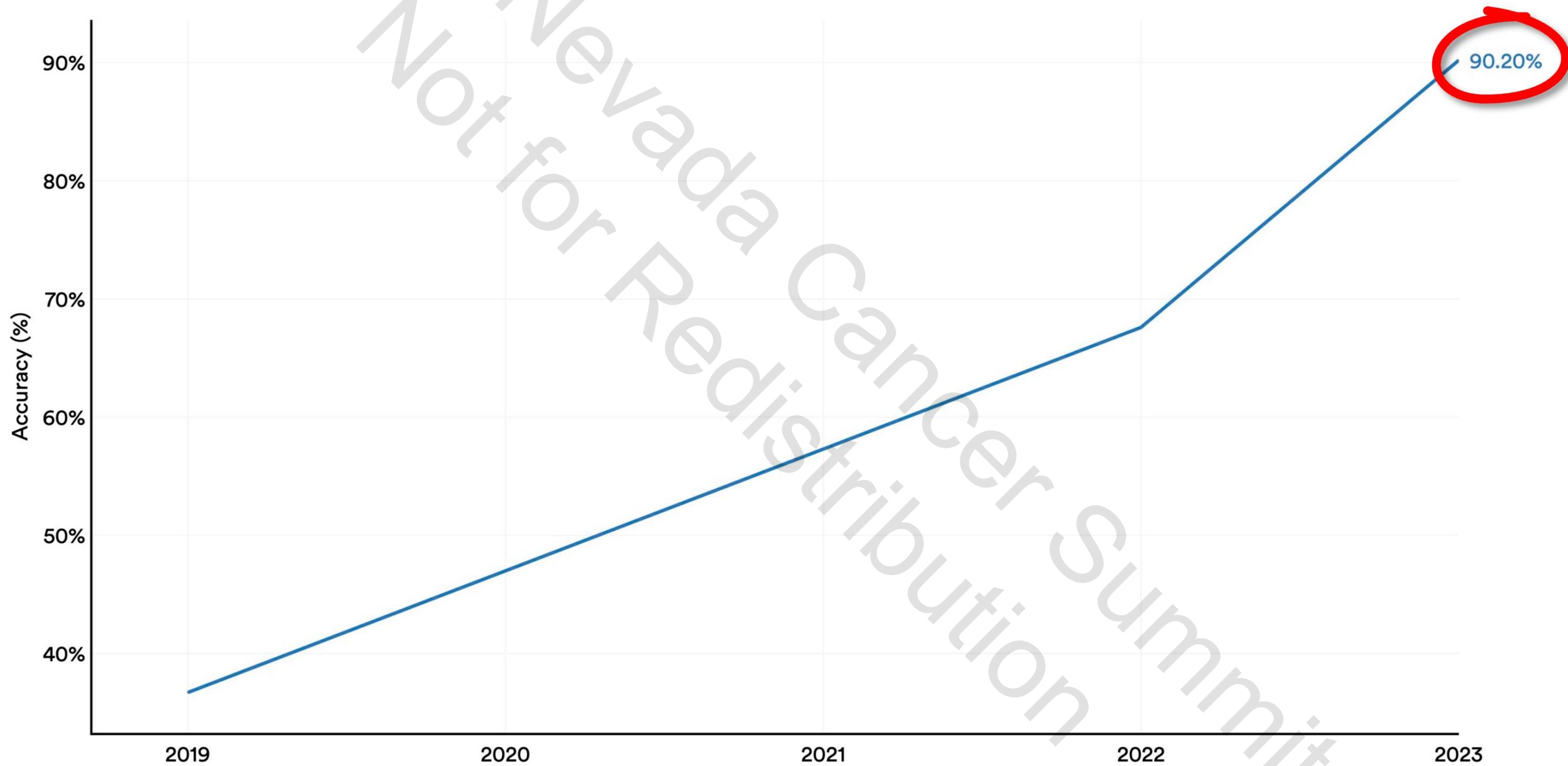
FUTURE

PRESENT

“You have to use it to know how to use it.”

MedQA: accuracy

Source: Papers With Code, 2023 | Chart: 2024 AI Index report



Dehumanizing?

Re ~~De~~humanizing?

“The hottest new technology for doctors promises to bring back an age-old health-care practice: face-to-face conversations with patients.”

–CNBC, Mar 2024

Doctors are Turning Medical Generative AI into a Booming Business

VITAL SIGNS
 Time 2300
 BP-SY 178
 BP-DI 88
 Pulse 77
 Resp 20
 Temp 98.6
 UT-Ped ~~OK~~

Medications
 Synthroid XALANOL
 Boniva

Tetanus: AD
 Allergies: NO ALLERGIES DOCUMENTED
 Pen Ery

Orders
 EKG
 AAS
 CBC Chem 10
 LFTs, Urea, Linc 0100

Q1 to Q2 c/s
 @ n/v today since 3 pm. @ Blood

PMH
 Hypertension
 HTN
 Glaucoma

NS 500cc 0100
 Phenergan 12.5mg 0100

@ Abd pain R-sided
 @ Diarrhea

ASSESSMENT/DIAGNOSIS
 Gall stone pancreatitis

@ BM built here ago. 2-3 today
 @ Flurs.

PSH
 Breast CA - metastatic
 Dec 17

DISPOSITION
 Home Full Duty
 Quarters
 24hrs 48hrs 72hrs

Some things happened two weeks ago but resolved.
 Rare EtOH use @ Tobacco.
 @ CP/SDB.

Modified Duty Until:
 Day: Mon: Yr:

Exam vomits in ED @ Blood. @ Bile

Pen, Ery, morph.

Referred to: 3

A&O, NAD
 @ JVD

Meds

Emergency Today
 72 hours Routine

Lungs LTA @
 Heart RR 9m
 2350
 Add: TTP in RUQ @ (Rebound).

Anes...
 Remepid
 Synthroid
 Xelatan

Admitted to: 7N
 Others: Blue Gen Surg

@ Superficial mass @
 Pen point of maximal tenderness.
 Ext. edema.

Condition Upon Release:
 Improved Unchanged
 Deteriorated
 Release Time: 0515

EKG: NSR of rhythm
 Signature of Provider/Stamp:

JOHN L. WESTHOFF, M.D.
 CPT, MC 7704
 RESIDENT, EMERG MED
 2003



2005

DAX Copilot

AI-automated clinical notes in seconds

DAX Copilot is an AI-powered voice-enabled solution that automatically documents patient encounters immediately after the patient visit. View the on-demand demo to see DAX Copilot in action and what it can do for you.

[View demo](#)



The positive impact on care delivery

7 min

saved per encounter, reducing documentation time by 50%.

70%

reduction in feelings of burnout and fatigue.

3 of 4

physicians state DAX improves documentation quality.

85%

of patients say their physician is more personable and conversational.



Photo by John Westhoff



A man in a grey suit and blue shirt is driving a car. He is sitting in the driver's seat, looking forward, but his hands are resting on his lap instead of on the steering wheel. The car's interior, including the steering wheel, dashboard, and center console, is visible. The background shows a blurred road and greenery, indicating the car is in motion. The word "Caution!" is written in large, bold, white letters across the center of the image. A faint watermark "Not4Ever" is visible in the background.

Caution!



How I Use
**Artificial
Intelligence**
(Today)



jwesthoff@unr.edu